

Registered Paddlers: We look forward to seeing you in camp on the evening prior to your launch date.

Day Paddlers: We suggest you be at the launch site 1 hour prior to the Rivermaster Orientation to allow for the registration process and preparation for your departure. You are responsible for your own food, beverage and carspotting during the course of the day.

Paddlers are REQUIRED EACH DAY to attend Rivermaster Orientation. Registering and obtaining appropriate wristbands will end when orientation begins. The Rivermaster Orientation will announce the group launch time, in most cases immediately to follow. Paddlers are to be prepared with all gear stowed & shuttles completed for your gear and/or vehicles at that time.

IMPORTANT NOTE: PARKING SPACE IS AT A PREMIUM. LARGE SUPPORT VEHICLES WILL NEED ACCESS TO DESTINATION CAMPSITES... DO NOT BLOCK WHEN SPOTTING CARS!!!

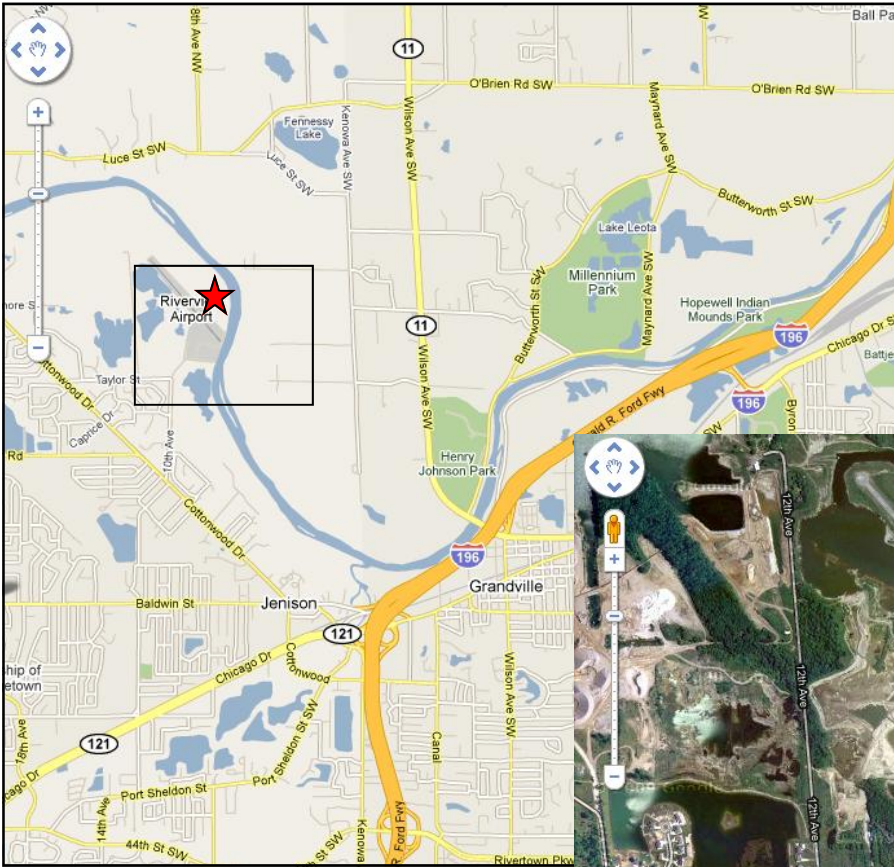
CLICK ON THE  FOR LINKS TO MAPS www.google/maps

July	MORNING CAMP LOCATION	LAUNCH SITE	Orientation/Launch Times	Camp L/L	Paddle Miles
				Launch L/L	
15	Michigan Center Leoni Township Park 5 th Street & Lourim St. *	SAME AS CAMP	orientation at Leoni/ Michigan Center at 6:30A/Launch at 7A	42.2279, -84.3267 42° 13' 40", -84° 19' 36"	25/25
16	Rives Junction Youth Haven Ranch 3796 Perrine Road *	SAME AS CAMP	orientation at Youth Haven Ranch at 7:30A/Launch at 8A	42.3934, -84.4532 42° 23' 36", -84° 27' 11"	20/45
17	Eaton Rapids Howe Memorial Field 100 Howe Drive *	114 Mill Street, Eaton Rapids, MI *	orientation at Launch Site at 6:45A/Launch at 7:30A	42.5119, -84.6606 42° 30' 43", -84° 39' 38" 42.5139, -84.6541 42° 30' 50", -84° 39' 15"	23/68
18	Lansing Woldumar Nature Center 5739 Old Lansing Road *	Grand River Park, Lansing, MI *	orientation at Launch Site at 7:45A/Launch at 8:30A	42.6921, -84.6323 42° 41' 31", -84° 37' 56" 42.7216, -84.5859 42° 43' 18", -84° 35' 9"	17/85
19	Grand Ledge Jaycee Park 510 South River St. *	SAME AS CAMP	orientation at 6:45A/ Launch at 7:30A	42.7505, -84.7409 42° 45' 2", -84° 44' 27"	27/112
20	Portland Thompson Field Canal Street & H St. *	SAME AS CAMP	orientation at 6:45A/ Launch at 7:30A	42.8674, -84.9099 42° 52' 3", -84° 54' 36"	18/130
21	Lyons Hazel Devore Park Water Street & N King St *	SAME AS CAMP	orientation at 6:45A/ Launch at 7:30A	42.9831, -84.9462 42° 58' 59" 84° 56' 46"	17/147
22	Saranac Village Depot Boat Launch N Ridge St & Main St. *	SAME AS CAMP	orientation at 7:45A/ Launch at 8:30A	42.9317, -85.2133 42° 55' 54" -85° 29' 24"	16.5/ 163.5
23	Ada Chief Hazy Cloud Park 21 Pettis Ave. NE *	SAME AS CAMP	orientation at 6:45A/ Launch at 7:30A	42.9667, -85.4901 42° 58' 0" -85° 29' 24"	16.5/ 180.0
24	Grand Rapids Lamoreaux Park 801 Bailey Park Dr. *	SAME AS CAMP	orientation at 6:45A/ Launch at 7:30A	43.0403, -85.6500 43° 2' 25" -85° 39' 0"	18.8/ 198.8
25	Jenison  Grand Ledge Campground 4243 Indian Mounds  *	SAME AS CAMP	orientation at 6:45A/ Launch at 7:30A	42.9123, -85.7695 42° 54' 44" -85° 46' 10"	11.5/ 210.3
26	Nunica Riverside County Park N Cedar and 104 th Ave. *	SAME AS CAMP	orientation at 6:45A/ Launch at 7:30A	43.0273, -86.0406 43° 1' 38" -86° 2' 26"	14.7/ 225

Grand Haven Marina Park/Farmer's Market/ Chinook Pier Area for take-out...

43.068245, -86.230700
43° 4' 6", -86° 13' 51" *

WARNING: These Locations are temporarily designated campsites for use ONLY in conjunction with the GRE 2010.



Grand River Expedition 2010 Grand Lady Camp Ground

Saturday Evening Stopover
July 24, 2010
Approximately 5:00 pm

Access turning left off of Taylor
going around south of airport.

